

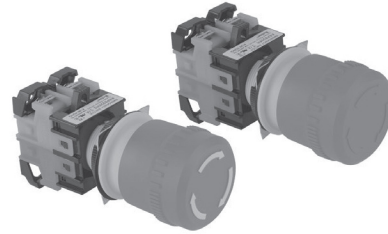


Ø22 EMERGENCY PUSH BUTTON

Classification

- 
- CE
-  "For use on a flat surface of a type 1 enclosure" (KEPB22 only)
- The body has excellent heat resistance, oil resistance and mechanical strength
- The maximum panel thickness for installation with Label plate: 5mm
- Protect rating: IP66 (equivalent NEMA4)
- NC terminal is designed to enable forced separation even if it is melted down
- Safety lock structure to prevent malfunction



KEPB22ERS

Ø22 EMERGENCY STOP SWITCH

Selection guide

KEPB22ERS - 1 1

	Classification	KEPB	KOINO Emergency Push Button
	Diameter	22	22mm
		25	25mm
		30	30mm
	Actuator	ER	Push to stop/Turn to release
		ERK	Push to stop/Turn(Key) to release
	Marking	S	White arrow printed
			No arrow printed
	Contact#		Numer of NO contact
			Numer of NC contact

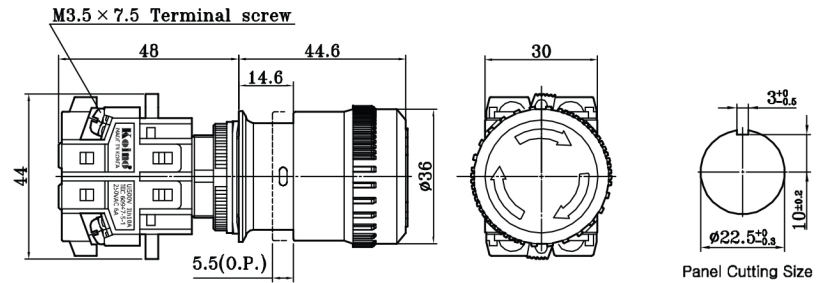
Specification

Products name	KEPB22ER(K), KEPB25ER(K), KEPB30ER(K)
Contact rating	125VAC 10A, 250VAC 6A
Insulation resistance	100MΩ (DC500V)
Contact resistance	30mΩ Max.
Withstand voltage	2,500VAC(50Hz/60Hz for 1 minute)
Vibration resistance	10~55Hz 3 axis 1.5m X, Y, Z each direction for 1 h
Shock resistance	About 100G
Operating ambient temperature	-15℃~+50℃ (not frozen condition)
Operating ambient humidity	45~85% RH
Protection rating	IP65 (Equivalent NEMA 4)
Operation frequency	30 operations per 1 minute
Electrical durability	Minimum 100,000 operations
Mechanical durability	Minimum 300,000 operations
Materials	Body: Nylon Button: Red

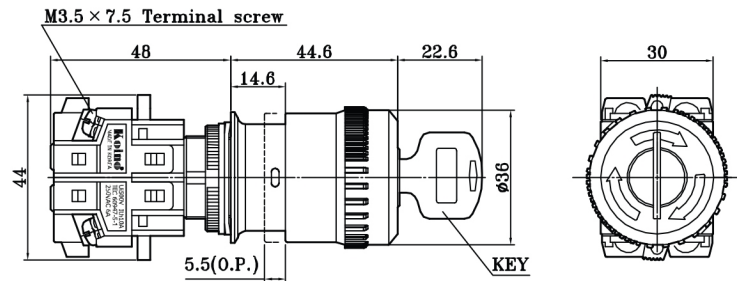
CONTROL COMPONENT

Dimensions

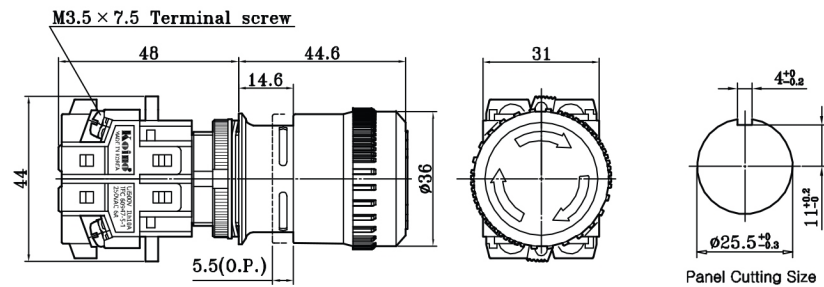
KEPB22ER



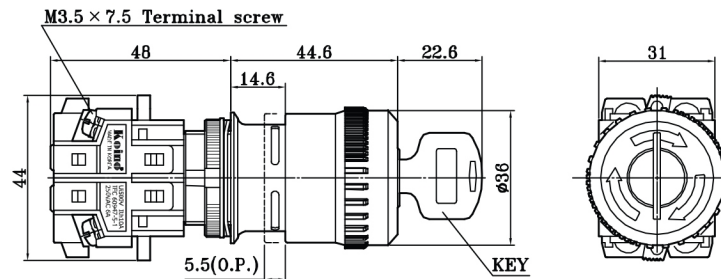
KEPB22ERK



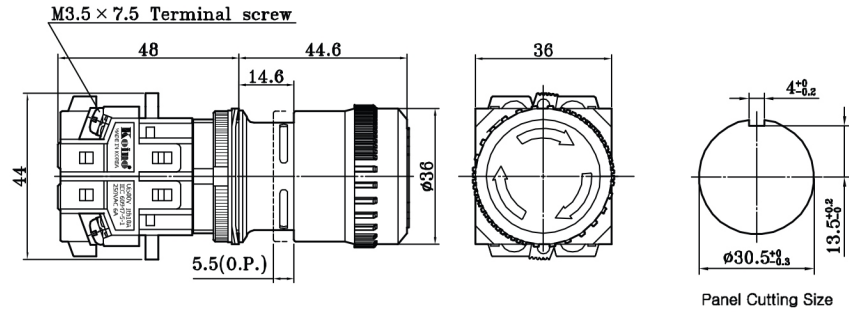
KEPB25ER



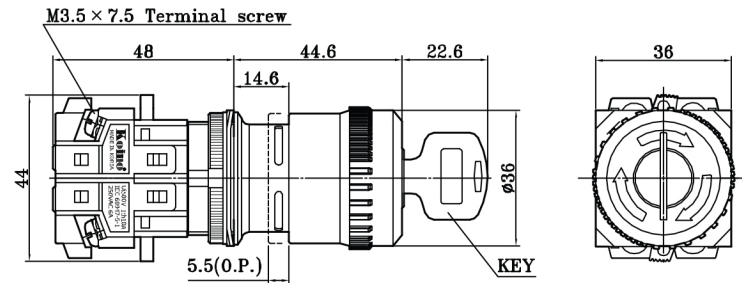
KEPB25ERK



KEPB30ER



KEPB30ERK



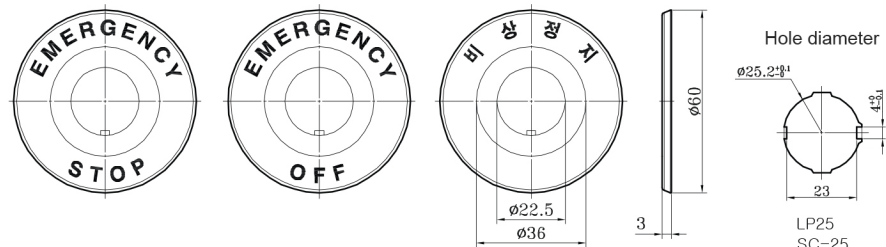
Accessories

Label Plate

LP-22(25, 30)-1

LP-22(25, 30)-2

LP-22(25, 30)-3



Safety Cover
SC-22

