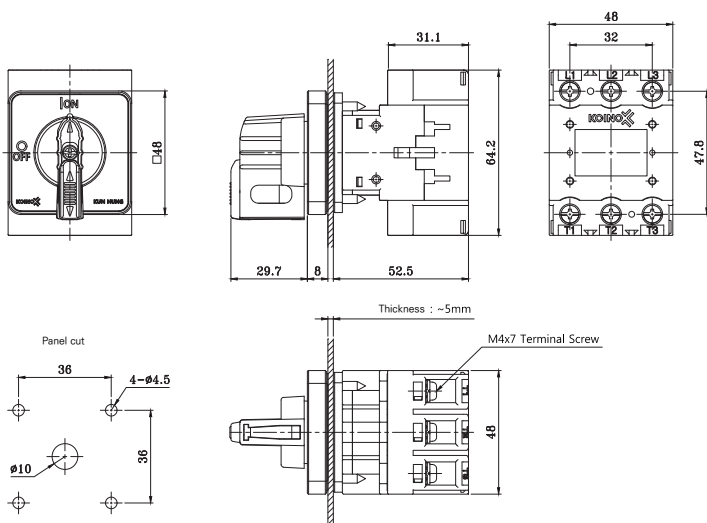


Equipment controls
Safety switch
Emergency power
disconnect
Transferring low voltage
circuits on load.

KMP-40

Disconnect switch



		25A	40A	63A
Rated insulation voltage (Ui)		690VAC		
Rated operating voltage (Ue)		690VAC		
Rated inrush current (Ith)		25A	40A	63A
Rated operating current (Ie)	AC21A	25A	40A	63A
	AC23A(3x400V)	16A	30A	37A
	AC23(3x400V)	20A	32A	45A
Rated impulse withstand voltage (Uimp)		6KV	6KV	6KV
Pollution degree		III/3		
Protection		IP65		
Ambient temperature		-25 ~ 60℃		
Ambient humidity		45 ~ 85% RH(Maximum 90% at 20℃)		
Mechanical lifespan		0.2M+ cycles		
Electrical lifespan		5000+ cycles		

IEC 60947-3, IEC 60947-5-1, VDE0660

