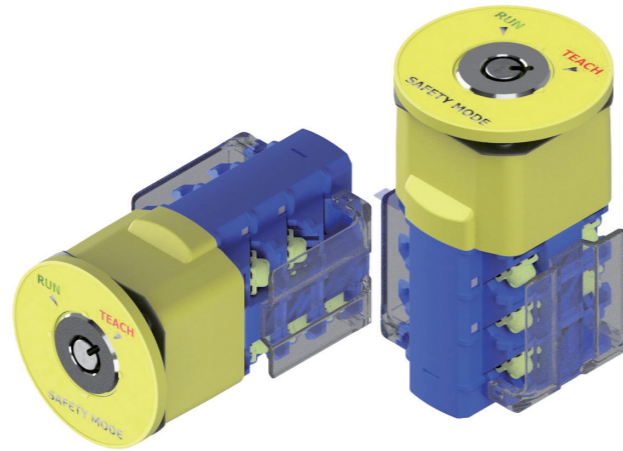


KSKG Series

Mode key Switch



Feature

- Linking a key switch with a contact block with a built-in solenoid structure that forces all contacts to disconnect.
- A locking function can be added as a maintenance key switch to ensure operator safety and prevent equipment malfunction.
- Types with various functions*

* For mode conversion: Mode change switch to start maintenance work.

* For multi-person external use: External control switch to allow multiple operators to enter the machine for maintenance.

* For multi-person internal: internal control switch for finalizing the maintenance.

Selection guide



	Code	Description
① Contacts	22	2B 2A
	31	3B 1A
	42	4B 2A
	51	5B 1A

Only 4 types of contact configurations are guaranteed for safety certification.

If the customer changes the configuration arbitrarily, the warranty is not maintained.

	Code	Description
② Solenoid	None	Non-solenoid
	S	Solenoid

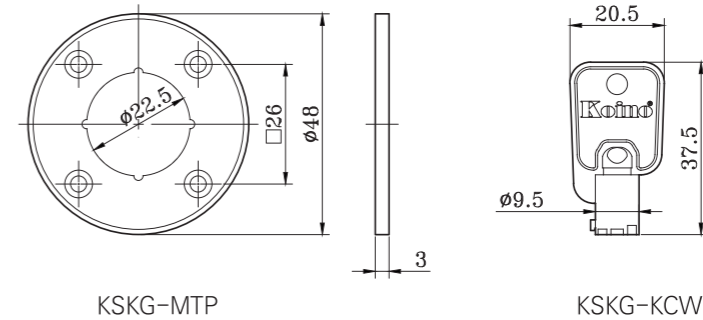
	Code	Position	Key separation	NC energized	KEY locked	Basic label
③ Operating unit	LCR	External	↗	↘	↗	KSKG-AT-ON
	LCL		↗	↘	↘	KSKG-AT-ON
	LCLR		↗	↘	↗↘	KSKG-AT-ON
	RCR	Internal	↗	↘	↗	KSKG-TA-IN

To change the Basic label, request it when ordering the product

Specification

P/N	KSKG
Contact rating	125VAC 6A, 250Vac 3A (Under resistive load)
Insulation resistance	100M Ω (DC500V Insulation Resistance Meter)
Withstand Voltage	2,500VAC (1 minute at 50Hz/60Hz)
Contact resistance	Maximum 50m Ω (Initial Value)
Vibration resistance	10 ~ 55 Hz Amplitude 1.5 mm X, Y, Z 1 hour each
Malfunction	at 10G(200m/s ²)
Shock resistance	30G(500m/s ²)+
Operating ambient temperature	-25 $^{\circ}$ C ~ +50 $^{\circ}$ C(-40 $^{\circ}$ C ~ +80 $^{\circ}$ C)
Operation frequency	15/min. (1 operation= ON-OFF-ON)
Rated insulation voltage (Ui)	600VAC, 250VDC
Rated impulse withstand voltage (Uimp)	4KV
Pollution degrees	Level 3
Minimum operating load	5VAC 500mA+, or 5VDC 100mA+
Electrical life	100,000 +
Mechanical life	100,000 +
Protection	IP65
Types of short-circuit protective devices	Fuse / '10A, 250VAC'
Conditional Short-circuit Current	0.1 kV

Accessory



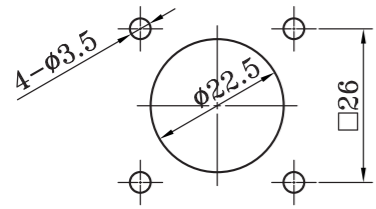
※ Accessories are included in the product package

Accessory selection guide

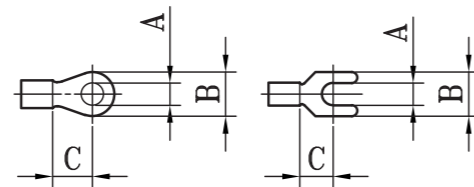
Label stickers for Mode conversion		Default	Accessory	
KSKG-AT-ON	KSKG-TA-IN	KSKG-NN-GN	KSKG-MTP	KSKG-KCW

Label stickers for multi users(External)			Label stickers for multi users(Internal)	
KSKG-MP1-ON	KSKG-MP2-ON	KSKG-MP1-IN	KSKG-MP2-IN	KSKG-MP3-IN

Panel cut

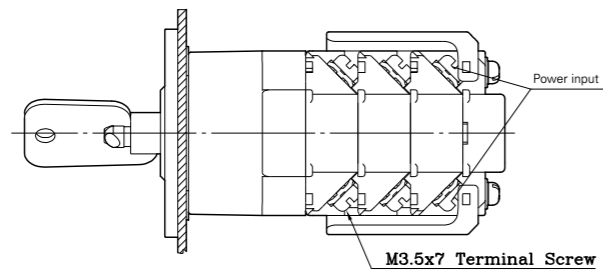


Terminal lug

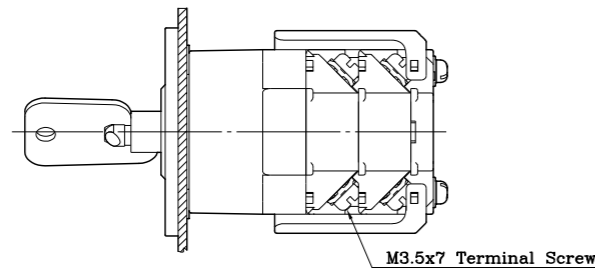
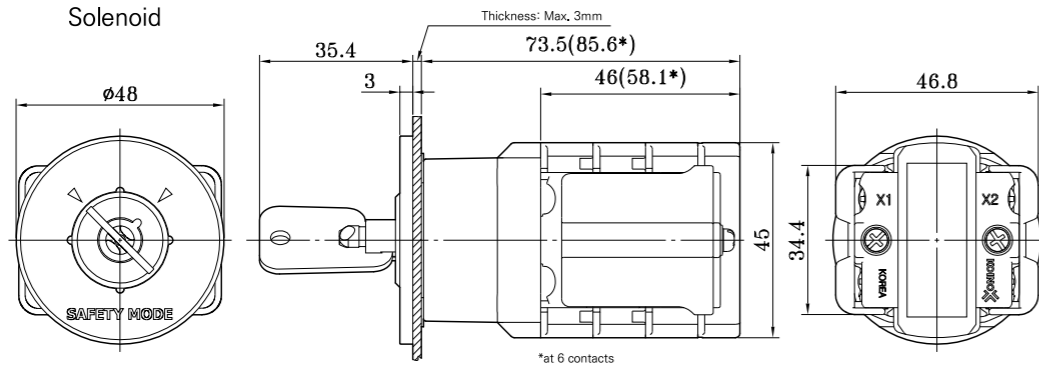


A	ø3.5 Min.
B	ø8 Max.
C	8mm Min.

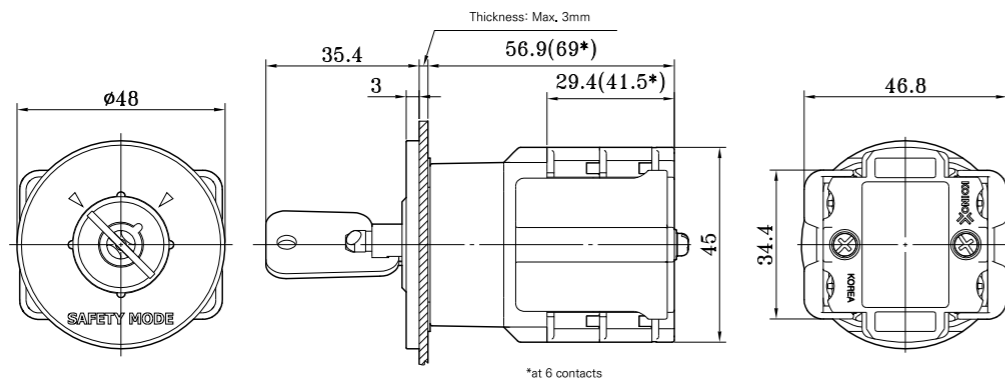
Dimension



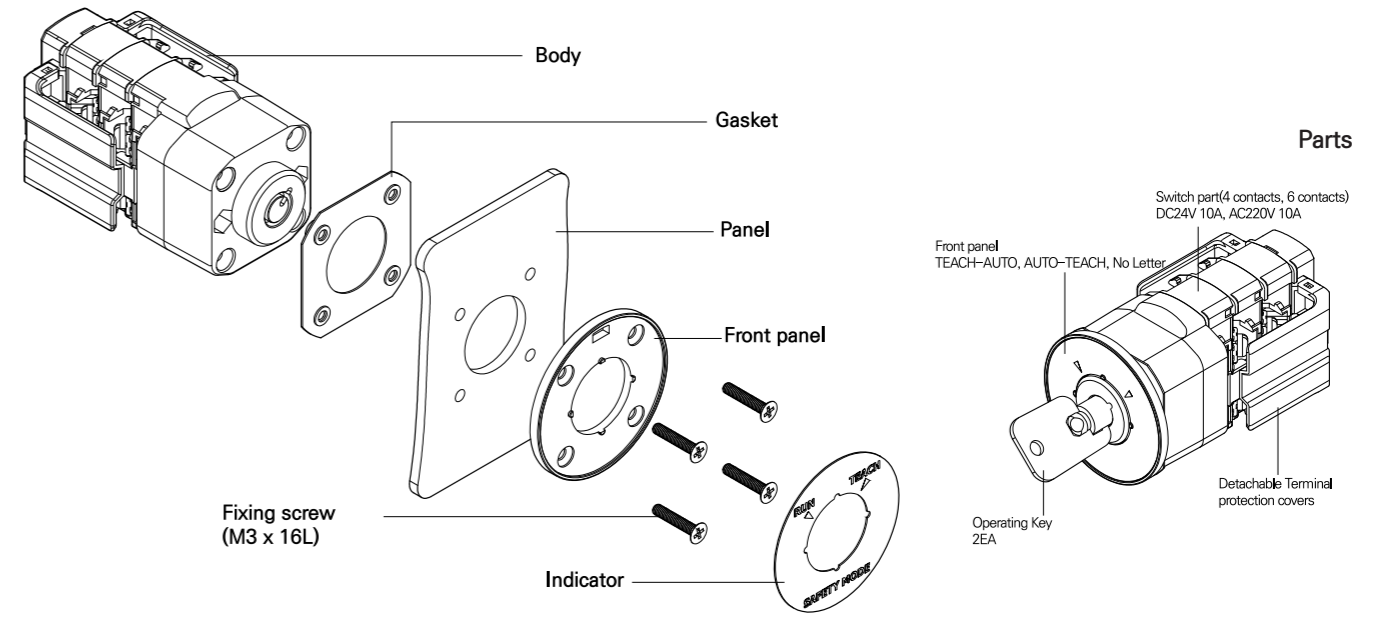
Solenoid



Non-solenoid

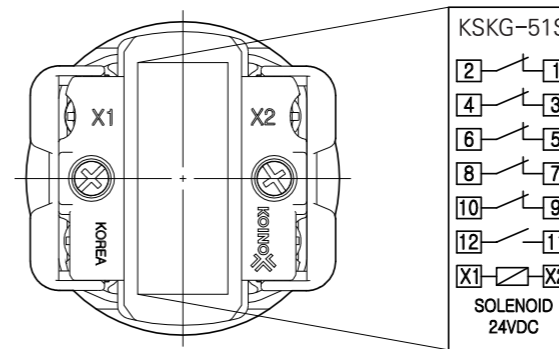


Panel mounting

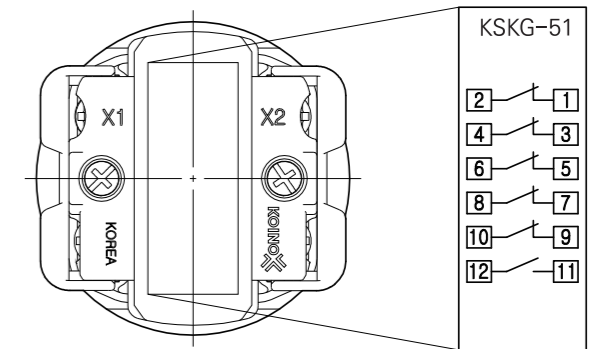


Contact configuration

Input power for Solenoid: DC24V(No polarity)

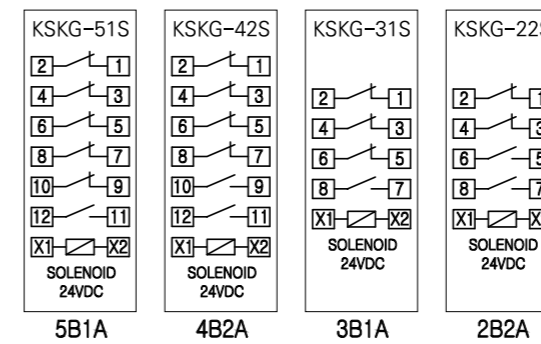


KSKG-51S- SRCR



KSKG-51- SRCR

Solenoid type



Non-solenoid type

